

# KQi2



## DIRECTED

Exclusively distributed by Directed Electronics Australia Pty Ltd.  
115-119 Link Road, Melbourne Airport, VIC. 3045, Australia  
Phone: +61 03 8331 4800  
Email: [info@niu-mobility.com.au](mailto:info@niu-mobility.com.au)  
[www.niu-mobility.com.au](http://www.niu-mobility.com.au)      [www.directed.com.au](http://www.directed.com.au)  
[www.niu-mobility.co.nz](http://www.niu-mobility.co.nz)      [www.directed.co.nz](http://www.directed.co.nz)

Manufacturer: Jiangsu Niu Electric Technology Co., Ltd.

Keep your kick scooter serial number on hand when contacting us.

You can find your serial number on the side of your kick scooter or on the [Manage] page in the NIU E-Scooter App.

V 1.1

NIU KICK SCOOTER USER MANUAL

# CONTENTS

<b>Safety precautions</b> .....	01	<b>Troubleshooting</b> .....	23
<b>Packing list</b> .....	03	<b>Maintenance and care</b> .....	24
<b>Parts</b> .....	04	Cleaning .....	24
<b>Dashboard</b> .....	05	Storage .....	25
<b>User guide</b> .....	06	Spare parts .....	26
Body assembly .....	06	Bearings maintenance .....	26
<b>Folding and handling</b> .....	07	Drum brake adjustments .....	27
Folding and unfolding .....	07	Handlebar adjustments .....	28
Handling .....	08	Grip mat replacement .....	29
Parking instructions .....	08	Tyres inflation .....	29
Charger connection .....	09	<b>Specifications</b> .....	30
Quick lock .....	10	<b>Warranty terms and conditions</b> .....	32
Lock .....	10	Indemnity .....	33
Unlock .....	11	<b>Warranty and warranty disclaimer</b> .....	33
Downloading the App .....	12	<b>Limitations of NIU liability</b> .....	35
<b>Ready to ride</b> .....	14		
Riding warnings .....	17		

## Safety precautions

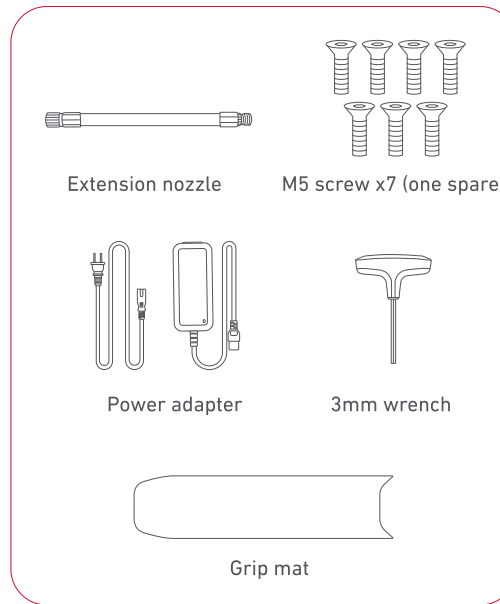
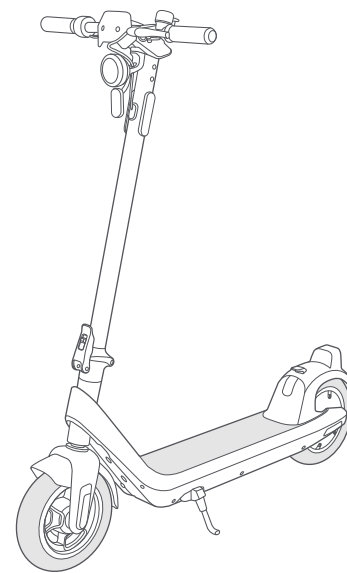
Please read this user manual carefully before using the product. Take note of the safety precautions and always abide by local laws and regulations when riding.

### **IMPORTANT: Read carefully and retain this user manual for future reference**

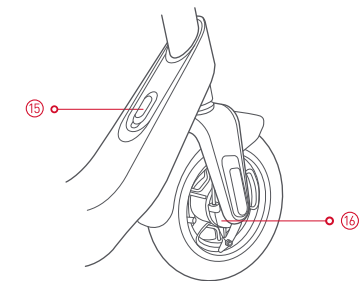
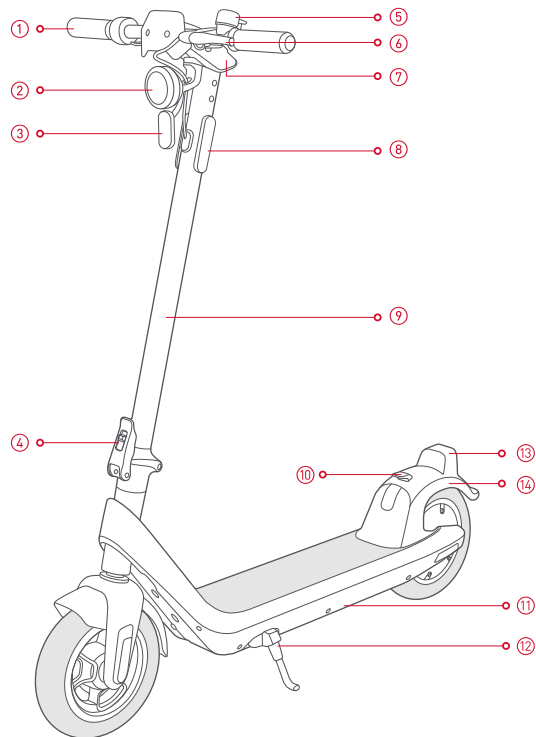
- Please read this user manual carefully to understand the functions and features of the kick scooter before riding it.
- The kick scooter is for both recreational and transportation use. When riding in a public area, the kick scooter will be considered as a vehicle, and there are potential safety risks associated with all vehicles.
- Please use the kick scooter in accordance with the instructions and warnings in this user manual to maximise user safety and compliance with national and local laws and regulations.
- Even with full compliance with these safety precautions, you may face other risks caused by illegal driving or improper operation from other vehicles and pedestrians. Always be aware of other vehicular and pedestrian traffic when riding the kick scooter.
- Like other vehicles, the faster the kick scooter goes, the longer will be the braking distance. Hence, it is important to be vigilant and maintain a proper speed and distance away from other vehicular and pedestrian traffic.
- It is recommended to ride in a relatively closed and flat terrain, such as a community park, paved trails or closed venues. Please be aware of your environment and ride at low speed with unfamiliar surroundings.
- Please respect the pedestrian's right of way when riding. Avoid alarming pedestrians, especially children. Always alert pedestrians when passing behind them and slow down when passing them. Where possible, pass on the right side of pedestrians when behind them. When facing pedestrians, keep to the left of them and ride slowly.

- You must comply strictly with all safety precautions outlined in this user manual. The manufacturer will not bear any direct and joint liability for any property loss, personal injury, accidents or legal disputes caused by inexperience and/or non-compliance of safety precautions in this user manual.
- Take time to learn the basics of riding and practice riding to avoid any serious accident that may be caused by inexperience and/or non-compliance with the use of the kick scooter.
- Do not lend this kick scooter to anyone who is unfamiliar with its operation to avoid any personal injury. If you do lend the kick scooter to someone, please ensure that the rider has read this user manual and understand clearly how to use the kick scooter. Please remind all riders to use personal protection equipment, such as an approved bicycle or skateboard helmet, elbow pads, knee pads and wrist guards while riding.
- Always check the condition of the kick scooter before each ride. Do not use or stop using the kick scooter if there are damaged or loose parts, a faulty battery, flat or worn tyres or abnormal noises or alarms coming from the kick scooter.
- The rider must observe all traffic rules of state and/or local authorities, which may differ from place to place.
- Please retain the original packaging in case you need to return the kick scooter for warranty claims. If non-original packaging is used, you will be responsible for any damage caused during transportation, additional logistical charges and other related expenses.
- This product may be used by children at least 14 years old and by persons with reduced physical, sensory or mental capabilities or without experience or knowledge, if they are properly supervised or have been given instructions relating to the safe use of the product and understood the risk involved. Children must not play with this product. Cleaning and maintenance shall not be done by children without adult supervision.

## Packing list

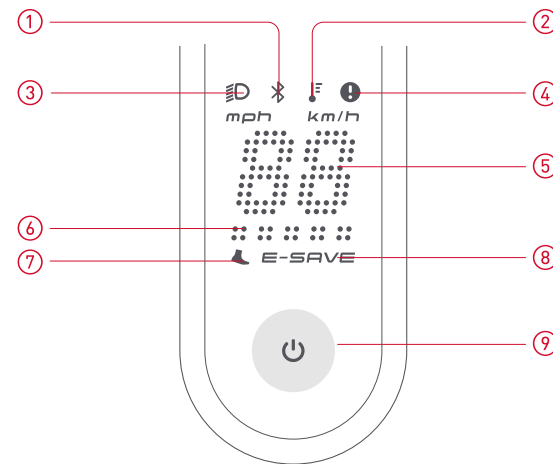


## Parts



- |                        |                         |
|------------------------|-------------------------|
| 1. Throttle            | 10. Folding buckle      |
| 2. Headlight           | 11. Battery compartment |
| 3. Front reflector     | 12. Kickstand           |
| 4. Quick release lever | 13. Brake light         |
| 5. Bell                | 14. Rear fender         |
| 6. Brake lever         | 15. Charging port       |
| 7. Dashboard           | 16. Drum brake          |
| 8. Side reflector      |                         |
| 9. Stem                |                         |

## Dashboard Info

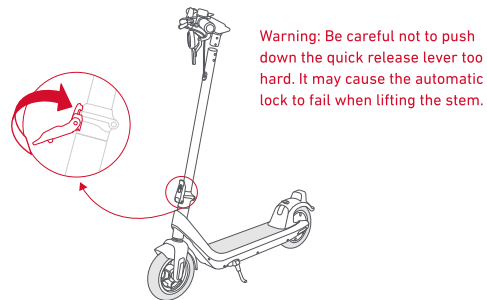


- |   |  |   |
|---|--|---|
| 1. Bluetooth status                           | 6. Battery indicator   | 9. Power/Operation button   |
| 2. Abnormal temperature warning               | 7. Pedestrian mode   | Long press the power button to turn on or off the vehicle.<br>Short press *1 for mode switch<br>Short press *2 for lights switch.<br>Short press *3 for speed unit switch<br>Short press *5 for pedestrian mode |
| 3. Lights                                     | Short press *5 to enter into pedestrian mode. The speed will be limited to 6km/h.<br>Short press the button to exit. |   |
| 4. Fault warning                              | 8. Riding mode   |   |
| 5. Real-time vehicle speed/Error code display | E-SAVE lights up: Eco mode<br>E-SAVE goes off: Sports mode<br>E-SAVE flashes: Custom mode (in-App)                   |   |

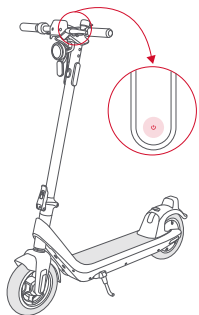
# User guide

## Body assembly

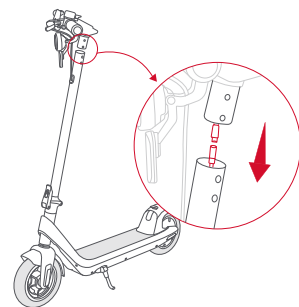
**01** Unfold the kick scooter and secure to the main body by fastening the quick release lever. Then lower the kickstand.



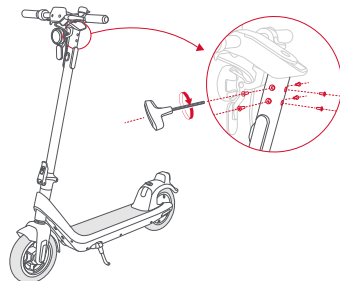
**03** Check that the wires connection is correct by turning on the power of the kick scooter.



**02** Connect the handlebar wire to the stem wire as shown and ensure that the two arrows meet together. Then attach the handlebar to the stem.

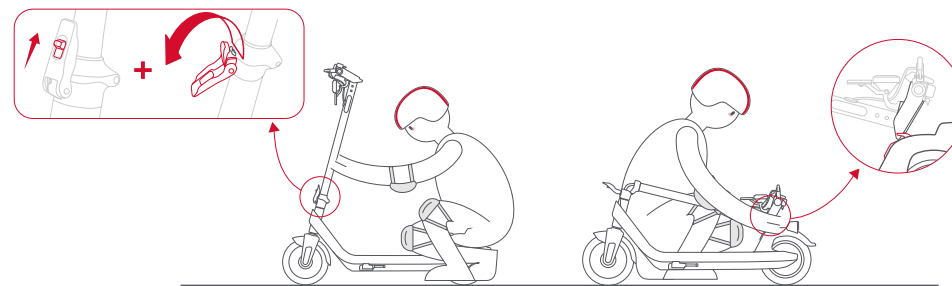


**04** Secure the handlebar and stem assembly with the supplied screws and tighten the screws with the included wrench. Recommended torque is 4Nm to 5Nm.



# Folding and handling

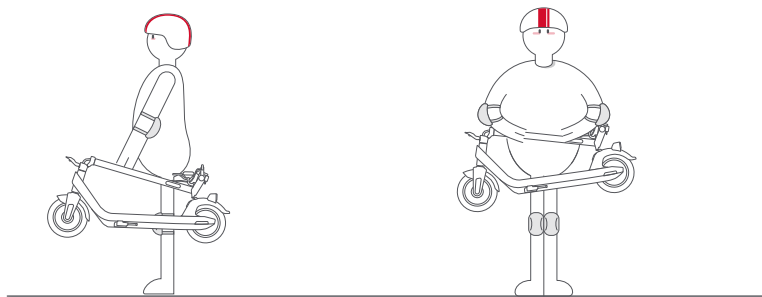
## Folding and unfolding



Make sure that the kick scooter is powered off. Next, hold the stem, open the quick release lever and fold the stem down towards the rear fender. Finally, hook the dashboard catch to the rear fender folding buckle.

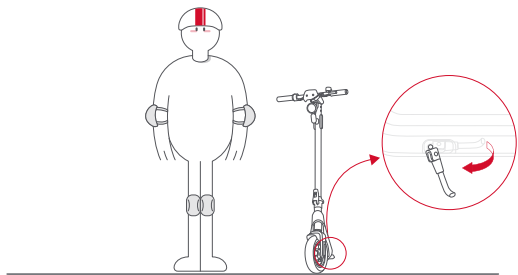
To unfold, press the button next to the folding buckle to disengage the catch, straighten the stem and lock it with the quick release lever.

## Handling



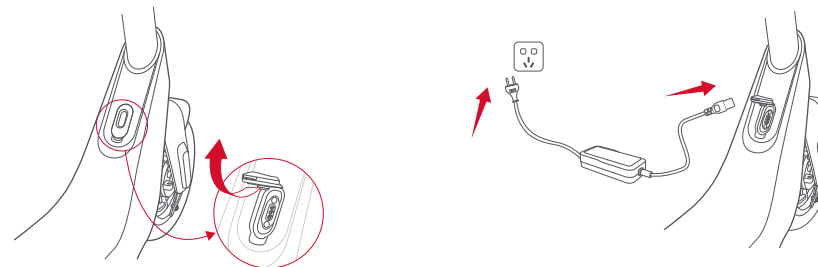
To carry the folded kick scooter, hold the stem with one or both hands as shown.

## Parking instructions



Lower the kickstand and park the kick scooter. To use it again, raise the kickstand.

## Charger connection

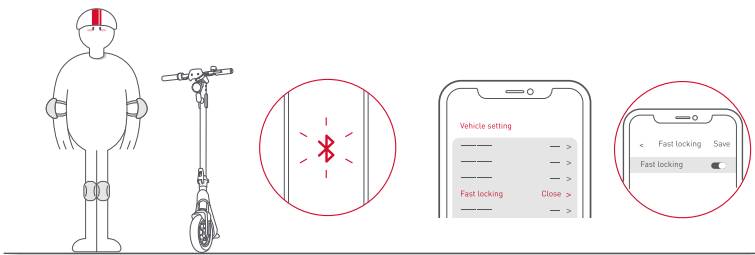


Open the charging port cover and then insert the charger plug into the charging port. Next, turn on the mains supply to charge. After charging, close the charging port cover and make sure that no liquid or water is in contact with the charging port.

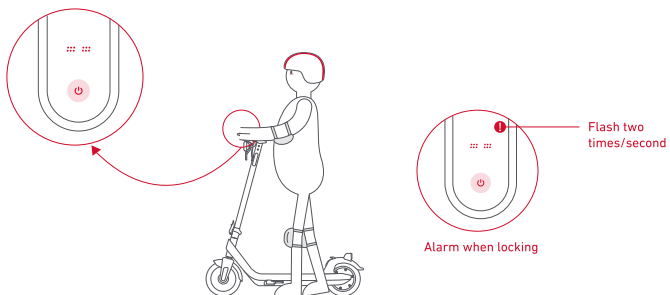
### **⚠ CAUTION**

- Do not charge when the charging port, charger, power cord or power socket is wet.
- Turn off power before charging.
- Use only the original charger supplied by the manufacturer.
- Do not use, charge or continue to charge if the battery is damaged or wet.
- Ensure that the charging port cover is fully closed after charging or when not charging.
- Do not charge outdoors.
- Do not ride while charging.
- The KQi2 Pro battery would need to be charged for approximately 7 hours from empty.
- If the battery is not fully charged within the specified duration, please consult your dealer or our customer service for assistance.
- Do not charge the battery overnight or for extended periods unattended.

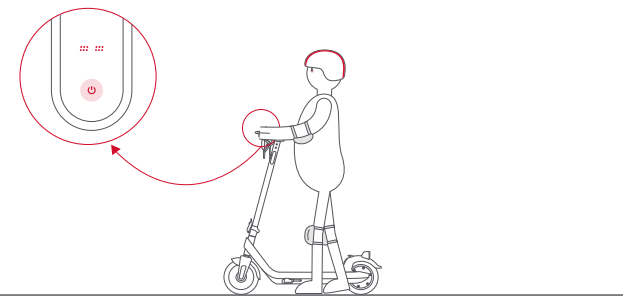
## Quick lock



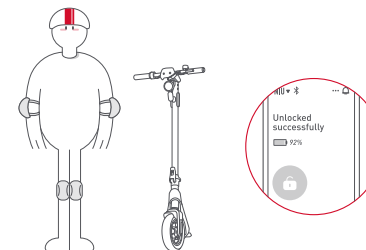
**01** To use the quick lock function, you will need to download the NIU E-Scooter App first and then activate the function via Bluetooth on your mobile device.



**Lock**  
**02** When the kick scooter is turned on, long press the power button for 5 secs to lock the kick scooter. The locking icon on the dashboard will flash twice per second and an alarm will sound when locking.



**Unlock**  
**01** Long press the power button for 2 secs to power up the kick scooter.



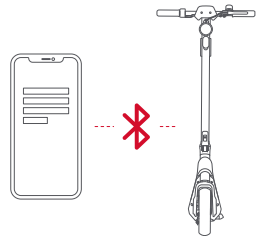
**02** Touch the unlock button on the App interface on your mobile device to unlock the kick scooter.

# Downloading the App

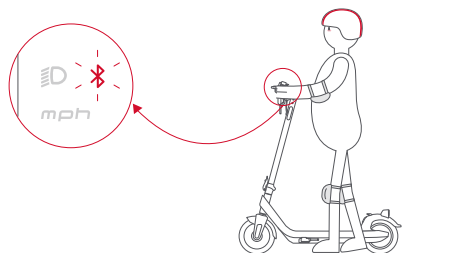


NIU E-Scooter App

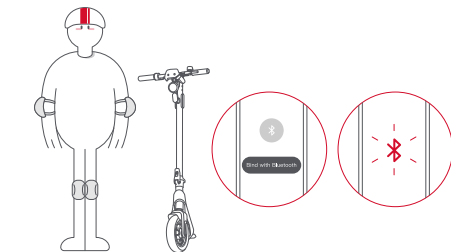
Scan the QR code and install the NIU E-Scooter App on your mobile device according to the prompts given. The App is also available at Google Play or Apple App store.  
Compatibility: Bluetooth Version 4.2 or above; iOS version 10.0 or above; Android 5.0 or above.



**01** After installing the App, please register and log in.

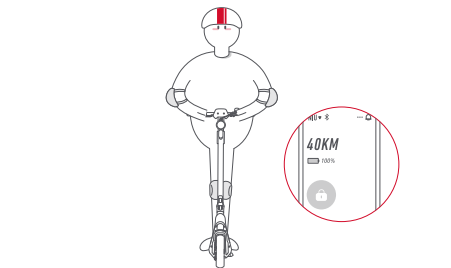


**02** Long press the power button on the kick scooter to power it up and the Bluetooth icon will start to flash.



**03** On the App, click on [Device Binding] and [Bind with Bluetooth] to connect to your kick scooter. The kick scooter will beep to indicate that Bluetooth connection is successful. The icon will then stop flashing and stay on when connected.

**NOTE:** Each time that a different mobile device is used, the pairing will need to be done again. If a change of NIU account is required, the original account holder will need to unbind the kick scooter from the account first.



**04** Use the App to activate the kick scooter and learn its various functions to fully enjoy your ride.



# Ready to ride

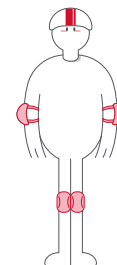
Like All vehicles, the kick scooter faces many potential safety hazards. Before first time use, take note of the following precautions and riding instructions.

For your safety, the new kick scooter will be locked in the E-SAVE mode of up to 15km/h for the first 200m of riding. After that, the kick scooter will give a beeping sound. You can now switch modes and ride at maximum speed.

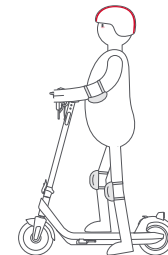
This feature is designed to provide additional rider safety for the first-time user and allow time to be familiar with a new riding experience.

## PRECAUTIONS BEFORE RIDING

- Ensure that the steering system and folding function are working properly, and that all components are securely tightened.
- Check that the wheel axle is fastened to the main body so that the wheels can rotate normally and that the brake is also working properly.
- Check the tyre pressures before riding. Recommended tyre pressure is between 45psi and 50psi.
- Check the wear on the tyres and brake pads. If the wear is serious and tyres and/or brake pads need to be replaced, please contact service personnel for advice.

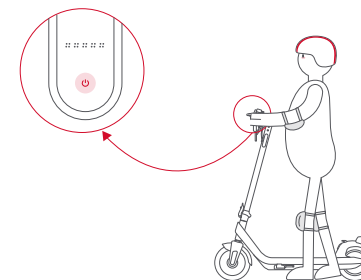


The risk of fall injuries is always present during practice. Always wear an approved bicycle or skateboard helmet, elbow pads, knee pads and wrist guards while riding.



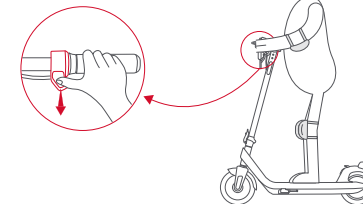
**02**

Stand on the main body with one foot and push off the kick scooter with the other foot.



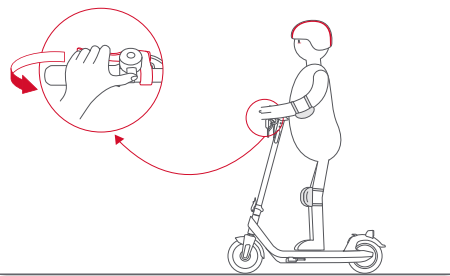
**01**

Long press the power button to turn on the power.



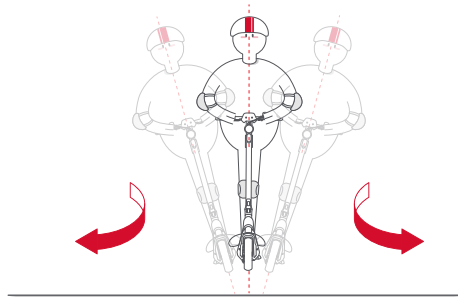
**03**

When the kick scooter is gliding, place both feet on the main body and gently press the throttle to move the kick scooter. (For additional safety, the throttle will only be activated when the kick scooter speed reaches 5km/h.)



**04** Release the throttle to slow down the kick scooter speed and use the brake lever to stop the kick scooter completely.

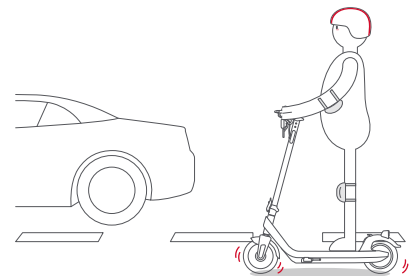
**NOTE:** Deceleration can be adjusted through energy recovery settings in the NIU E-scooter App.



**05** When turning, lean the body slightly towards the direction of turn, and slowly turn the handlebar during the manoeuvre.

**NOTE:** Avoid hard braking whenever possible. When hard braking is inevitable, lean the body backwards and bend the knees to reduce the risk of falls.

## Riding warnings



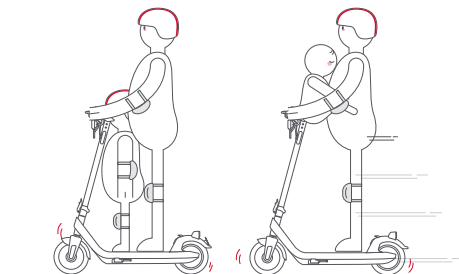
- Do not ride on public roads, motorways or highways.



- Do not ride over any water level that exceeds 2cm.



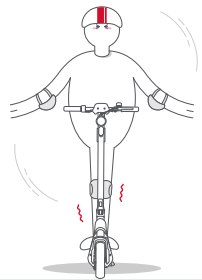
- Do not ride in the rain or snow.



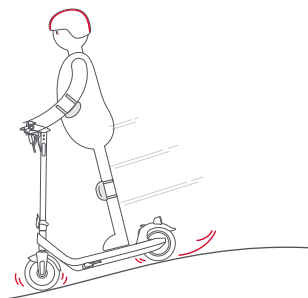
- Riding with more than one person or with baby in arms on the kick scooter is strictly not allowed.



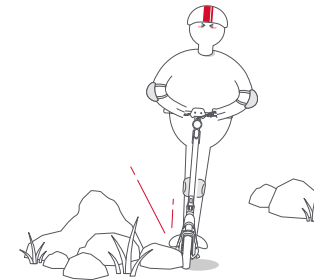
- Do not ride with one foot on the main body and the other foot on the ground. Wear appropriate footwear when riding.



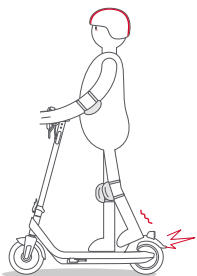
- Stepping on the rear fender while riding the kick scooter is strictly not allowed.



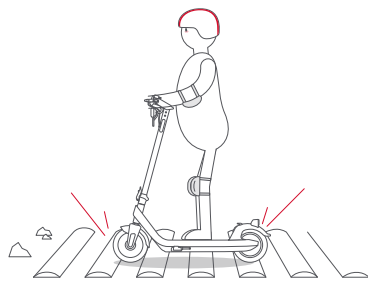
- Do not accelerate when riding downhill.



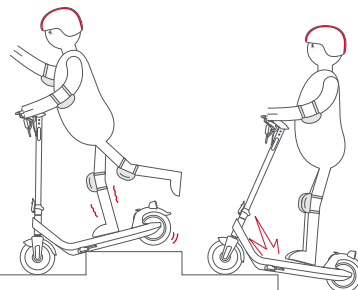
- Avoid any obstacles while riding.



- Do not use the mobile phone and always keep both hands on the handlebar when riding.



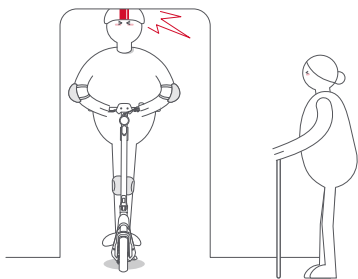
- Do not ride at high speed when passing over speed humps, potholes or unpaved paths and trails.



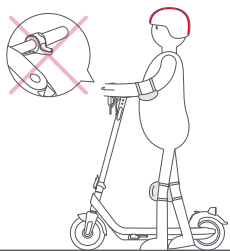
- Do not use the kick scooter to ride over steps or jump over obstacles.



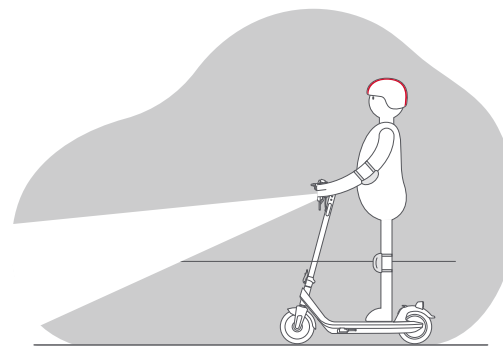
- Do not hang heavy objects, such as a backpack, on the handlebar as this will affect the stability of the kick scooter.



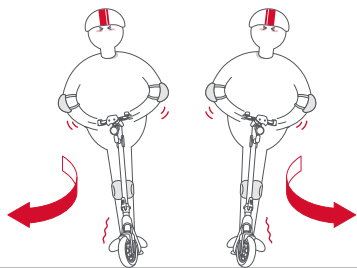
- Do not ride indoors.



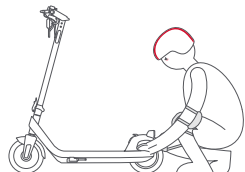
- Do not use the throttle when walking with the kick scooter.



- Riding in darkness without any lights is not recommended. Use the headlight when riding in the dark.



- Do not steer the kick scooter aggressively when riding at high speeds.



- Do not touch the brake immediately after using the kick scooter as the brake is very hot and may cause burns.

## Warnings

- As with any mechanical equipment, a vehicle is subjected to high stresses and wear. The various materials and components may react differently to wear and fatigue. If the expected service life for a component has been exceeded, it may break suddenly and cause injuries to the user. Cracks, scratches and discolouration in areas that are subject to high stresses indicate that the component has exceeded its service life and should be replaced.
- Traffic conditions in the city have many obstacles such as curbs and steps. It is recommended to avoid obstacle jumps. Anticipate and adapt your trajectory and speed to those of a pedestrian before crossing these obstacles. It is also recommended to stop riding when obstacles are too dangerous due to their shapes, heights and slippages.
- Keep all plastic packaging away from children to avoid suffocation.
- Avoid high traffic or overcrowded areas.

- When riding, anticipate your trajectory and speed while respecting traffic rules and pedestrian traffic.
- Announce your presence when approaching a pedestrian or cyclist.
- Walk while crossing protected passages.
- Do not use the kick scooter other than its intended purpose.
- The kick scooter is not intended for acrobatic use.
- Use only NIU approved parts and accessories. Modifications to the kick scooter will void the warranty and could result in serious injury and damage.
- The recommended age for using the kick scooter is 14 years old and above. For riders below 18 years old, they must ride with adult supervision.
- Anyone that is under the influence of alcohol and/or drugs is not allowed to ride the kick scooter.
- The maximum rider weight is 100kg for the KQi2 Pro, KQi3 Sport and KQi3 Pro and 120kg for the KQi3 Max.
- Handle with care. Be wary of sharp edges caused by usage.
- Do not modify or alter the kick scooter, such as the stem, folding buckle and brake, in any way that are not specified in these instructions.
- Check that all connections are securely fastened as they may become loose after regular use.
- The kick scooter is for domestic use only. Commercial use will void the warranty.

## Troubleshooting

Please refer to this chart to help troubleshoot the problems with the relevant solutions.

Error code	Problem	Solution
31	Battery MOS tube damaged	Please contact the dealer
32	Battery contaminated with water	
37	Battery short-circuit protection warning	
33	Battery open-circuit or imbalance warning	
34	Batter low-temperature warning	Place kick scooter at room temperature and wait for vehicle temperature to normalise
35	Batter over-temperature warning	Stop using kick scooter and wait for battery temperature to normalise
38	Battery overcurrent charging warning	Disconnect charger
39	Battery overcurrent discharging warning	Please contact the dealer
40	Battery over-charging warning	Ride until battery reverts to normal level
41	Battery over-discharging warning	Please charge the kick scooter
42	Battery communication fault and verification failure	Limit speed to 6km/h and contact dealer
01	Power tube of controller faulty	Please contact dealer
02	Brake faulty	Check the brake lever or contact dealer
03	Throttle faulty	Check throttle or contact dealer
04	Controller overcurrent	Please contact dealer

Error code	Problem	Solution
05	Controller overheated	Stop using kick scooter and wait for controller temperature to normalise
06	Driving power of controller faulty	Please contact dealer
08	Undervoltage/overvoltage of controller	Charge the kick scooter or contact dealer
07	Controller communication faulty and verification failure	Please contact dealer
10	Motor rotor locked	
11	Motor phase loss	
12	Motor hall sensors error	
13	Motor overheated	Stop using kick scooter and wait for motor temperature to normalise

## Maintenance and Care

### Cleaning

- Wipe the main body with a soft wet cloth. If dirt build-up is difficult to clean off, apply some toothpaste and rub the dirt with a toothbrush repeatedly. Then remove the residue with a soft wet cloth.
- Do not clean your kick scooter with alcohol, petrol, kerosene or other corrosive and volatile solvents. These substances may damage the appearance and internal components of the kick scooter. Do not use high-pressure water jets to spray on the kick scooter. Before cleaning, make sure that the kick scooter is powered off, and the charging port cover is tight to prevent any damage due to water contamination.

### Storage

- Accessories and any other additional items that are not approved by the manufacturer shall not be used.
- Please store the kick scooter in a flat, stable, dry and well-ventilated location.
- Prolonged exposure to UV rays, rain and weather elements may damage the surface materials. Store indoors when not in use.
- For long storage periods, maintain the battery power level between 30% and 70% and recharge it once every two months to extend the battery lifespan.
- After long-term storage, fully charge the battery and check the tyre pressure before use.
- Do not charge the battery when the charging port or charging cable is wet.
- If any abnormal sound and noise are caused during riding or pushing, stop riding. Carefully check the source of the sound and noise before riding again.
- If you notice a problem with the battery pack, do not attempt to fix it on your own. Consult our customer service.
- This product contains batteries that can only be replaced by qualified personnel.
- Please use only a charger with this reference: <PLD70-EVCN88-54>. Otherwise, the battery may be damaged or in danger of ignition and explosion.
- Do not touch the battery contacts to prevent any battery damage or personal injury.
- Do not remove the battery. The operation of the vehicle may be affected due to incorrect assembly.
- Please check the condition of the kick scooter each time before use. Inflate the tyres regularly. If there are any irregular tyre cracks, please consult professional help in replacing them.

- Do not store the kick scooter near a heat source as it may cause battery failure, overheating and fire risk. If the battery is damaged or the battery compartment is contaminated with water, do not charge or continue to use the battery.



- It is strictly prohibited to immerse the battery and kick scooter body in water, ride in the rain and clean the kick scooter body with high-pressure water jets in order to prevent water contamination with the battery compartment and circuitry.

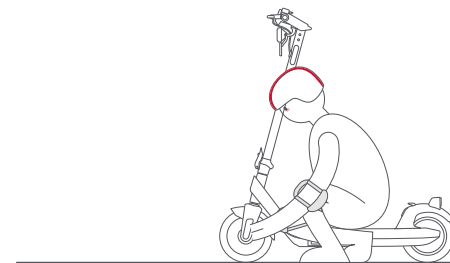
## Spare parts

If spare parts are needed, they can be purchased from selected dealers and at [www.niu-mobility.com.au](http://www.niu-mobility.com.au) and [www.niu-mobility.co.nz](http://www.niu-mobility.co.nz). Use of non-genuine parts will void the warranty.

## Bearings maintenance

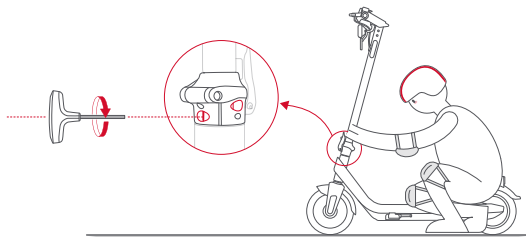
Check the condition of the kick scooter regularly. If you hear any abnormal bearing sounds, feel any vibrations or notice any other irregular things (especially with the kick scooter bearings), stop using the kick scooter at once and consult professional assistance for checks and repairs. Do not attempt to fix it yourself. Do not touch the brake.

## Drum brake adjustments

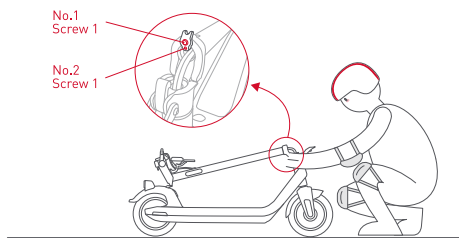


- Excessive braking force**  
If you feel the brake is too tight, use a wrench to loosen the brake swing arm nut anti-clockwise. Then return the brake cable to shorten its tail and lock the nut clockwise. Confirm the braking force.
- Insufficient braking force**  
If you feel the brake is too loose, use a wrench to loosen the brake swing arm nut anti-clockwise. Then pull out the brake cable to lengthen its tail and lock the nut clockwise. Confirm the braking force.

## Handlebar adjustments



If the handlebar is shaking, check to see if any screws are loose. If so, tighten the screws on the stem first and then the two screws at the folding catch with a 6mm hexagon wrench.

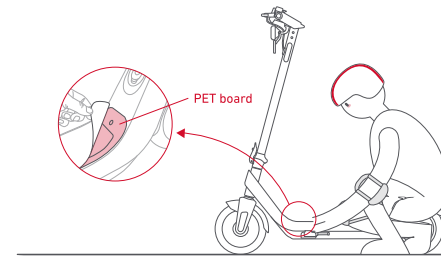


If the stem is wobbling due to falls, adjust No.1 and No.2 screws as follows:

- Loosen No.1 screw anti-clockwise with three or four turns using a No. 5 inner hexagon wrench.
- Tighten No.2 screw clockwise with two to three turns using a No. 2.5 inner hexagon wrench.
- Tighten No. 1 screw clockwise using a No. 5 inner hexagon wrench.

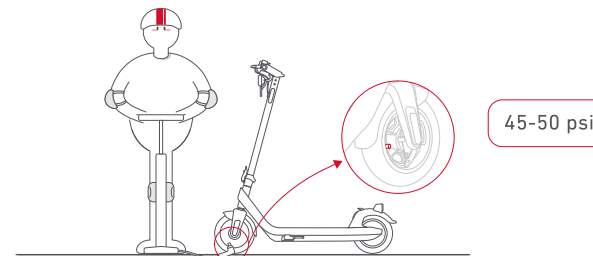
If the above steps do not solve the problem, contact qualified personnel for help.

## Grip mat replacement



When replacing the mat, please directly remove the surface sandpaper for replacement. Do not remove the PET board below the sandpaper.

## Tyres inflation



To inflate the tyres, first remove the valve cap from the tyre valve. Then attach the female end of the extension nozzle to the tyre valve and the male end to a tyre pump. Start pumping. After the tyres are inflated, remove the extension nozzle and replace the valve cap. Recommended tyre pressure is between 45psi and 50psi.



# Specifications

Category		KQi2 Pro
Product size	Before folding	1147mm(L) x 520mm(W) x 1220mm(H)
	After folding	1147mm (L) x 520mm (W) x 520mm (H)
Product weight	Net weight	Approx. 18.4 kg
Rider	Maximum load	100 kg
	Age range	14+ years old
	Height	120cm to 200cm
Vehicle operations	Maximum speed	Approx. 25 km/h
	Average battery range <sup>[1]</sup>	Approx. 40 km
	Maximum slope <sup>[2]</sup>	15%
	Applicable terrain	Flat paved roads/trails not higher than 1cm and road gaps not exceeding 3cm
	Working temperature	-10°C to 45°C
	Storage temperature	0°C to 40°C
	A-weighted emission sound pressure level	50dB
	IP rating	IP54

Category		KQi2 Pro
Battery pack	Rated voltage	46.8V DC
	Rated wattage hours	365 Wh
	Charging voltage	54.6V DC
	Charging temperature	0°C to 40°C
	Battery management system	7th NIU Energy™ smart power tech
Motor	Rated voltage	300 W
Tyres	Size	10" x 2.3"
	Recommended tyre pressure	45psi to 50psi
Charger	Input voltage	100V-240V ~ 1.5A 50Hz-60hz
	Rated output	53.5 V = 1.3 A
	Output power	70 W
	Charging time	Approx. 7 hrs

[1] Average battery range: This is with a rider weighing 75kg riding at a constant speed of 15km/h on a flat road with an ambient temperature of 25°C and a fully charged battery. Factors affecting battery range include speed, number of startups and shutdowns, rider weight and ambient temperature.

[2] Maximum slope: This is the maximum gradient achievable by rider weighing 75kg riding at a constant speed of 8km/h with an ambient temperature of 25°C and a fully charged battery.

# Warranty terms and conditions

Our goods come with guarantees that cannot be excluded under the Australian Consumer Law. You are entitled to a replacement or refund for a major failure and for compensation for any other reasonably foreseeable loss or damage. You are also entitled to have the goods repaired or replaced if the goods fail to be of acceptable quality and the failure does not amount to a major failure.

This warranty is provided in addition to your rights under the Australian Consumer Law. Directed Electronics Australia Pty Ltd (Directed Electronics) warrants that this product is free from defects in material and workmanship for the specified period below or 10,000km whichever occurs first from the date of purchase or for the period stated on the packaging. This warranty is only valid where you have used the product in accordance with any recommendations or instructions provided by Directed Electronics.

<b>Main body</b> (incl. battery, battery charger, frame, motor, controller and dashboard)	2 years
<b>Accessories</b> (incl.brake levers, brake disc, brake line, throttle control and other non-daily consumable parts)	6 months
<b>Consumable parts</b> (incl. anti-collision strip, headlight, bell, fender, taillight, decorative cover, kickstand and grip mat)	3 months

This warranty excludes defects resulting from alterations of the product, accident, misuse, abuse or neglect. In order to claim the warranty, you must return the product to the retailer from which it was purchased or if that retailer is part of a National network, a store within that chain, along with satisfactory proof of purchase. The retailer will then return the goods to Directed Electronics.

Directed Electronics will repair, replace or refurbish the product at its discretion. The retailer will contact you when the product is ready for collection. All costs involved in claiming this warranty, including the cost of the retailer sending the product to Directed Electronics, will be borne by you.

**Phone:** +61 03 8331 4800 | **Email:** service@niu-mobility.com.au

# Indemnity

You agree to defend, indemnify and hold harmless NIU and its subsidiaries and affiliates from and against any and all claims, proceedings, injuries, liabilities, losses, costs and expenses (including reasonable legal fees), including but not limited to, claims alleging negligence, invasion of privacy, copyright infringement and/or trademark infringement against NIU and its subsidiaries and affiliates, relating to or arising out of your breach of any provision of these terms, your misuse of NIU products or its services, or your unauthorized modification or alteration of products or software.

# Warranty and warranty disclaimer

NIU has a limited warranty, whereby NIU warrants to you and only to you that this NIU product will be free from defects in materials and workmanship for one (1) year from the date of your purchase (unless a longer warranty period is required by law). The specifics of this NIU limited warranty are covered in this manual.

To the extent possible under governing law, other than the above product warranty for the NIU product you understand and agree that the NIU products and services are provided on an “as is” and “as available” basis.

NIU makes no warranty that the NIU products and services will meet your requirements or that use of the NIU products and services will be uninterrupted, timely, secure or error-free. Nor does NIU make any warranty as to the accuracy or reliability of any information obtained through NIU (including third party content), that any defects in the NIU products or services be corrected or that the NIU products or NIU services will be compatible with any other specific hardware or service.

Further, NIU does not warrant that NIU products or services or NIU servers that provide you with data and content are free of viruses or other harmful components. NIU also assumes no responsibility for and shall not be liable, for any damages caused by viruses that may infect your NIU product or software.

In the event of any loss, damage or injury, you will not look to NIU to compensate you or anyone else. You release and waive for yourself and your insurer all subrogation and other rights to recover against NIU arising as a result of the payment of any claim for loss, damage or injury.

NIU equipment and services do not cause and cannot eliminate occurrences of certain events and NIU makes no guarantee or warranty, including any implied warranty of merchantability or fitness for a particular purpose or that NIU equipment and services provided will detect or avert such incidents or their consequences.

NIU does not undertake any risk that you or property, or the person or property of others, may be subject to injury or loss if such an event occurs. The allocation of such risk remains with you, not NIU.

Other than the above product warranty for NIU products, its suppliers disclaim all warranties of any kind, whether express, implied, or statutory, regarding the NIU products and services, including any implied warranty of title, merchantability, fitness for a particular purpose, or non-infringement of third party rights.

Because some jurisdictions do not permit the exclusion of implied warranties, the last sentence of this section may not apply to you. NIU hereby further expressly disclaims all liability for any claims for service failures that are due to normal product wear, product misuse, abuse, product modification, improper product selection or your non-compliance with all applicable federal, state or local laws.

This warranty and warranty disclaimer give you specific legal rights, and you may have other rights that vary by state, province, or country. Other than as permitted by law, NIU does not exclude, limit or suspend other rights you have, including those that may arise from the nonconformity of a sales contract.

For a full understanding of your rights, you should consult the laws of your state, province, or country. For our Australian customers: Please note that this warranty is in addition to any statutory rights in Australia in relation to your goods which, pursuant to Australian Consumer Law, cannot be excluded.

## Limitations of NIU liability

Under no circumstances will NIU be liable in any way for any content, including, but not limited to, the loss of content, any errors or omissions in any content, or any loss or damage of any kind incurred in connection with use of or exposure to any content posted, emailed, accessed, transmitted, or otherwise made available via NIU.

NIU liability for damages, especially for breach of duty or obligation, delay in performance, non-performance, or malperformance shall be precluded, except when these are due to negligent breaches of any significant contractual duty or obligation on the part of NIU. Any liability for negligence is limited to direct losses usually and typically foreseeable in such case. Should the claim for damages be based on wilful or grossly negligent breach of contractual duty or obligation on the part of NIU, the preclusion and limitation of liability mentioned in the preceding sentences will not apply. The preceding preclusion and limitation of liability will also not apply to claims for damages arising out of loss of life, bodily injury or health impacts for which NIU may be liable, or for non-contractual liability.

Some states and countries do not allow the exclusion or limitation of incidental or consequential damages, so the above limitation or exclusion may not apply to you. Additionally, this provision is not intended to limit NIU's liability in the event of NIU's wilful or intentional misconduct.

# Maintenance Record

Date		Mileage	
<b>Notes:</b>			
<b>Dealer:</b>			

# Maintenance Record

Date		Mileage	
<b>Notes:</b>			
<b>Dealer:</b>			

# 英



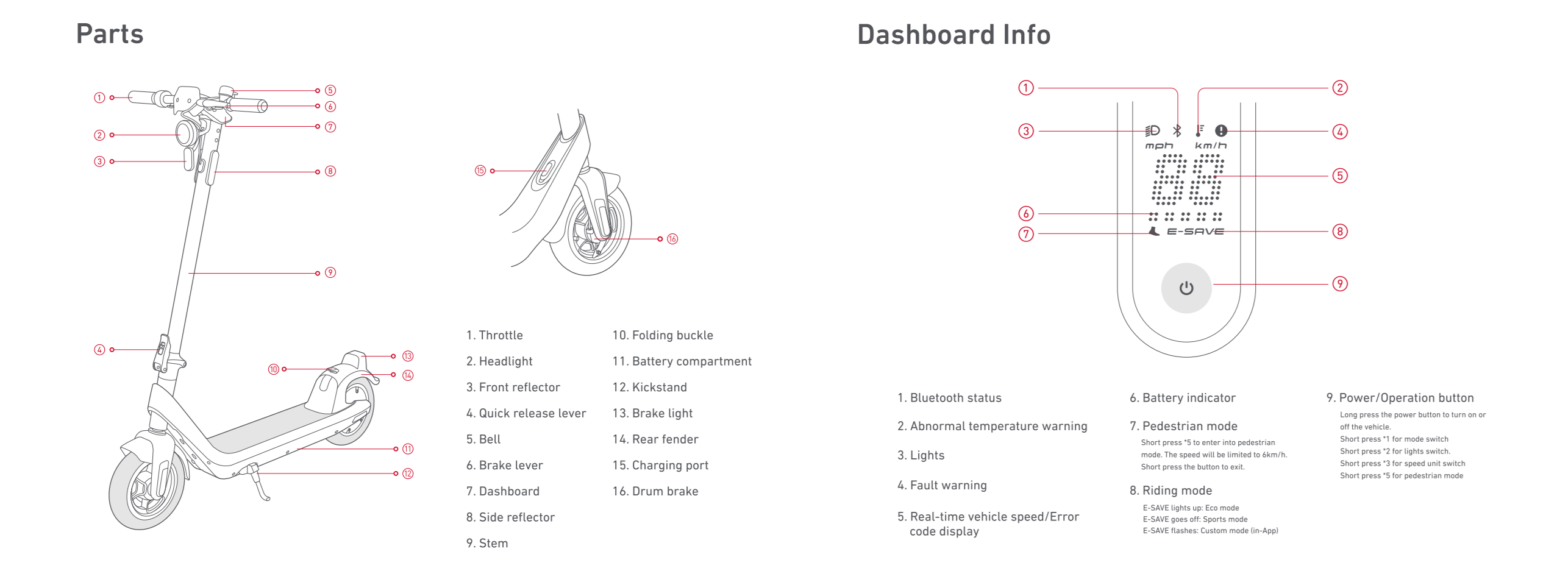
<b>CONTENTS</b>	
Safety precautions	01
Parts	04
Dashboard	05
User guide	06
Body assembly	08
Folding and unfolding	07
Parking instructions	08
Charger connection	09
Quick lock	10
Lock	11
Downloading the App	12
Ready to ride	14
Riding warnings	17

### Safety precautions

Always read the user manual and follow the instructions in this product. Use each of the safety precautions and always adhere to local laws and regulations when riding.

**IMPORTANT! Read warnings and instructions before the first ride.**

- The battery is a power source and it is not recommended to touch the battery or the battery pack before riding.
- The battery is a power source and it is not recommended to touch the battery or the battery pack before riding.
- The battery is a power source and it is not recommended to touch the battery or the battery pack before riding.



### Technical Specifications

Model	KQi2 Pro
Motor	400W
Power	350W
Max Speed	25km/h
Max Range	30km
Max Load	120kg
Max Height	1.8m
Max Weight	16kg
Max Power	350W
Max Voltage	36V
Max Current	10A
Max Temperature	40°C
Max Humidity	80%
Max Rainfall	50mm
Max Wind Speed	10m/s
Max Snowfall	10cm
Max Ice Thickness	5cm

### User guide

#### Body assembly

**01** Check the battery level and ensure the front battery is fully charged. The lock function will not work if the battery is not fully charged.

**02** Connect the handlebar stem to the front fork. The handlebar stem will be inserted into the front fork. The handlebar stem will be inserted into the front fork.

**03** Check the front wheel and ensure the front wheel is fully inflated. The front wheel will not work if it is not fully inflated.

**04** Check the front wheel and ensure the front wheel is fully inflated. The front wheel will not work if it is not fully inflated.

#### Folding and handling

**01** Long press the power button for 5 seconds to power on the scooter.

**02** Press the power button for 5 seconds to power on the scooter.

**03** Press the power button for 5 seconds to power on the scooter.

#### Ready to ride

**01** Press the power button for 5 seconds to power on the scooter.

**02** Press the power button for 5 seconds to power on the scooter.

**03** Press the power button for 5 seconds to power on the scooter.

#### Charger connection

**01** Connect the charger to the power button.

**02** Connect the charger to the power button.

**03** Connect the charger to the power button.

#### Warnings

- Do not use the scooter on wet surfaces.
- Do not use the scooter on uneven surfaces.
- Do not use the scooter on rough surfaces.
- Do not use the scooter on steep slopes.
- Do not use the scooter on icy surfaces.
- Do not use the scooter on snowy surfaces.

#### Ready to ride

**01** Press the power button for 5 seconds to power on the scooter.

**02** Press the power button for 5 seconds to power on the scooter.

**03** Press the power button for 5 seconds to power on the scooter.

#### Riding warnings

- Do not use the scooter on wet surfaces.
- Do not use the scooter on uneven surfaces.
- Do not use the scooter on rough surfaces.
- Do not use the scooter on steep slopes.
- Do not use the scooter on icy surfaces.
- Do not use the scooter on snowy surfaces.

#### Charger connection

**01** Connect the charger to the power button.

**02** Connect the charger to the power button.

**03** Connect the charger to the power button.

#### Warnings

- Do not use the scooter on wet surfaces.
- Do not use the scooter on uneven surfaces.
- Do not use the scooter on rough surfaces.
- Do not use the scooter on steep slopes.
- Do not use the scooter on icy surfaces.
- Do not use the scooter on snowy surfaces.

#### Troubleshooting

Problem	Solution
Battery not charging	Check the battery level and ensure the front battery is fully charged.
Power button not working	Press the power button for 5 seconds to power on the scooter.
Motor not working	Check the motor and ensure the motor is fully charged.
Brake not working	Check the brake and ensure the brake is fully charged.

#### Storage

- Do not store the scooter in a hot or cold environment.
- Do not store the scooter in a humid environment.
- Do not store the scooter in a dusty environment.
- Do not store the scooter in a wet environment.

#### Maintenance and Care

### Cleaning

- Use a soft cloth to clean the scooter.
- Use a soft brush to clean the scooter.
- Use a soft brush to clean the scooter.

#### Drum brake adjustments

**01** Adjust the drum brake tension.

**02** Adjust the drum brake tension.

**03** Adjust the drum brake tension.

#### Brake adjustments

**01** Adjust the brake tension.

**02** Adjust the brake tension.

**03** Adjust the brake tension.

### Specifications

Parameter	Value
Motor	400W
Power	350W
Max Speed	25km/h
Max Range	30km
Max Load	120kg
Max Height	1.8m
Max Weight	16kg
Max Power	350W
Max Voltage	36V
Max Current	10A
Max Temperature	40°C
Max Humidity	80%
Max Rainfall	50mm
Max Wind Speed	10m/s
Max Snowfall	10cm
Max Ice Thickness	5cm

### Warranty terms and conditions

The warranty period is 12 months or 10,000 km, whichever comes first.

The warranty does not cover damage caused by misuse or neglect.

The warranty does not cover damage caused by accidents or theft.

### Limitations of NIU liability

NIU is not liable for any damage or loss caused by the scooter.

NIU is not liable for any damage or loss caused by the scooter.

NIU is not liable for any damage or loss caused by the scooter.

### Maintenance Record

Date	Mileage

### Maintenance Record

Date	Mileage

### Dimensions

Parameter	Value
Max Length	1180mm
Max Width	160mm
Max Height	1180mm
Max Weight	16kg
Max Power	350W
Max Voltage	36V
Max Current	10A
Max Temperature	40°C
Max Humidity	80%
Max Rainfall	50mm
Max Wind Speed	10m/s
Max Snowfall	10cm
Max Ice Thickness	5cm

### Quantity

1

### Revisions

1

### Dimensions

Parameter	Value
Max Length	1180mm
Max Width	160mm
Max Height	1180mm
Max Weight	16kg
Max Power	350W
Max Voltage	36V
Max Current	10A
Max Temperature	40°C
Max Humidity	80%
Max Rainfall	50mm
Max Wind Speed	10m/s
Max Snowfall	10cm
Max Ice Thickness	5cm

### Dimensions

Parameter	Value
Max Length	1180mm
Max Width	160mm
Max Height	1180mm
Max Weight	16kg
Max Power	350W
Max Voltage	36V
Max Current	10A
Max Temperature	40°C
Max Humidity	80%
Max Rainfall	50mm
Max Wind Speed	10m/s
Max Snowfall	10cm
Max Ice Thickness	5cm